

Get Involved in the Discussion!



WWW.I26ALT.ORG



INFO@I26ALT.ORG



Subscribe to our newsletter!



Like us on Facebook!



Follow us on Twitter!

Help us understand
how **transit**
moves you...



i26ALT

WWW.I26ALT.ORG

BCDC  G

1362 McMillan Ave,
North Charleston, SC 29405

WWW.I26ALT.ORG

INFO@I26ALT.ORG

|| The Berkeley-Charleston-Dorchester Council of Governments (BCDCOG) has initiated the I-26 Regional Fixed Guideway Transit Alternatives Analysis (*I-26ALT*) to identify and evaluate a long term transit solution for the Charleston region along the I-26 Corridor between Summerville and Charleston.

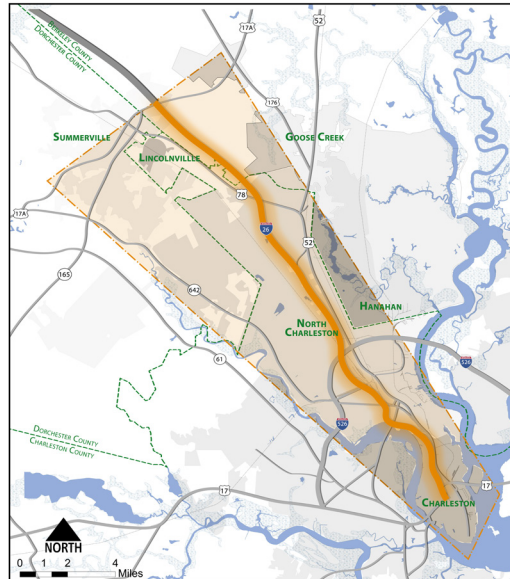
The purpose of this 15-month study is to identify transit modes, such as bus rapid transit (BRT), light rail, or commuter rail, and alignments that will manage transportation demand, support the regional economy, and create livable communities within the study area.

|| Project Goals

- Improve Mobility
- Support the Regional Economy
- Promote Livable Communities

|| I-26 ALT Study Process

- Comprehensive assessment of existing CARTA
- Alternatives Analysis of fixed guideway transit service inside the I-26 Corridor Study Area
- Public Involvement & Surveys
- Coordination with local, state, and federal agencies to identify a Locally Preferred Alternative



|| I-26 ALT Study Area

The I-26 Alternatives Analysis will consider the effects of transit alternatives on the segment of I-26 between the Town of Summerville and the City of Charleston. The project study area includes the areas and communities surrounding the I-26 Corridor and is generally bounded by the Ashley River and Dorchester Road (SC 642) to the west, the Summerville town limits to the north, the Cooper River and the US 52 Corridor and US 176 Corridors to the east, and the Charleston peninsula to the south. The study area also includes the Norfolk Southern rail line that operates parallel to I-26 between Downtown Summerville and Peninsula Charleston.

Public involvement is critical to the success of the *I-26 Alternatives Analysis!*

Get involved and share your ideas...

Upcoming Meetings:

Monday, November 17, 2014

6PM- 8PM
Charleston Progressive Academy
382 Meeting Street, Charleston, SC 29403

Tuesday, November 18, 2014

7PM- 9PM
Rollings Middle School of the Arts
815 S. Main Street, Summerville, SC 29483

Wednesday, November 19, 2014

6PM- 8PM
North Charleston High School
1087 E. Montague Avenue, North Charleston, SC

For more information visit us at
www.I26ALT.org